



WELCOME TO

OMLC ONLINE 2022

WE'LL BE STARTING SOON....



Outcome Mapping
LEARNING COMMUNITY

www.outcomemapping.ca



WELCOME TO

OMLC ONLINE 2022

SESSION 6



Outcome Mapping
LEARNING COMMUNITY

www.outcomemapping.ca

OMLC ONLINE 2022

Blending OM&OH

Mariam Smith and Richard Smith



Outcome Mapping
LEARNING COMMUNITY

Some strengths: OM vs. OH

BP1

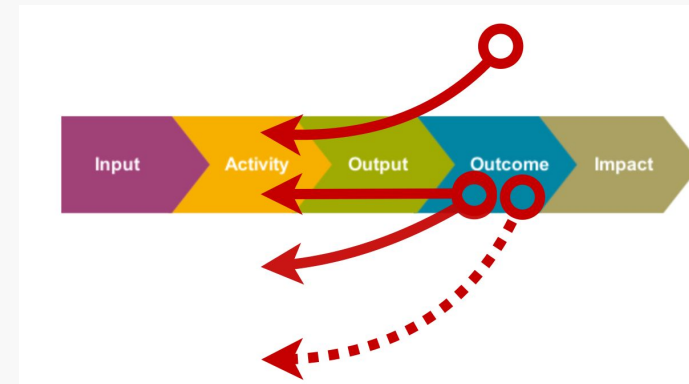
Business Challenge for People Affected by Cancer

During the program, TCM expects to see people affected by:	Business challenge	Realistic goal
1. Experiencing emotional distress	emotional distress	emotional distress
2. Experiencing physical distress	physical distress	physical distress
3. Experiencing financial distress	financial distress	financial distress
4. Experiencing social distress	social distress	social distress
5. Experiencing spiritual distress	spiritual distress	spiritual distress
6. Experiencing family distress	family distress	family distress
7. Experiencing community distress	community distress	community distress
8. Experiencing environmental distress	environmental distress	environmental distress
9. Experiencing cultural distress	cultural distress	cultural distress
10. Experiencing religious distress	religious distress	religious distress
11. Experiencing ethnic distress	ethnic distress	ethnic distress
12. Experiencing racial distress	racial distress	racial distress
13. Experiencing gender distress	gender distress	gender distress
14. Experiencing sexual distress	sexual distress	sexual distress
15. Experiencing reproductive distress	reproductive distress	reproductive distress
16. Experiencing fertility distress	fertility distress	fertility distress
17. Experiencing pregnancy distress	pregnancy distress	pregnancy distress
18. Experiencing childbirth distress	childbirth distress	childbirth distress
19. Experiencing postpartum distress	postpartum distress	postpartum distress
20. Experiencing infant distress	infant distress	infant distress
21. Experiencing toddler distress	toddler distress	toddler distress
22. Experiencing preschool distress	preschool distress	preschool distress
23. Experiencing school distress	school distress	school distress
24. Experiencing college distress	college distress	college distress
25. Experiencing university distress	university distress	university distress
26. Experiencing postgraduate distress	postgraduate distress	postgraduate distress
27. Experiencing professional distress	professional distress	professional distress
28. Experiencing career distress	career distress	career distress
29. Experiencing job distress	job distress	job distress
30. Experiencing workplace distress	workplace distress	workplace distress
31. Experiencing industry distress	industry distress	industry distress
32. Experiencing sector distress	sector distress	sector distress
33. Experiencing economy distress	economy distress	economy distress
34. Experiencing global distress	global distress	global distress
35. Experiencing international distress	international distress	international distress
36. Experiencing transnational distress	transnational distress	transnational distress
37. Experiencing multinational distress	multinational distress	multinational distress
38. Experiencing supranational distress	supranational distress	supranational distress
39. Experiencing intergovernmental distress	intergovernmental distress	intergovernmental distress
40. Experiencing nongovernmental distress	nongovernmental distress	nongovernmental distress
41. Experiencing nonstate distress	nonstate distress	nonstate distress
42. Experiencing subnational distress	subnational distress	subnational distress
43. Experiencing regional distress	regional distress	regional distress
44. Experiencing local distress	local distress	local distress
45. Experiencing community distress	community distress	community distress
46. Experiencing neighborhood distress	neighborhood distress	neighborhood distress
47. Experiencing district distress	district distress	district distress
48. Experiencing ward distress	ward distress	ward distress
49. Experiencing parish distress	parish distress	parish distress
50. Experiencing township distress	township distress	township distress
51. Experiencing village distress	village distress	village distress
52. Experiencing hamlet distress	hamlet distress	hamlet distress
53. Experiencing settlement distress	settlement distress	settlement distress
54. Experiencing built-up area distress	built-up area distress	built-up area distress
55. Experiencing conurbation distress	conurbation distress	conurbation distress
56. Experiencing urban area distress	urban area distress	urban area distress
57. Experiencing city distress	city distress	city distress
58. Experiencing metropolis distress	metropolis distress	metropolis distress
59. Experiencing conurbation distress	conurbation distress	conurbation distress
60. Experiencing urban area distress	urban area distress	urban area distress
61. Experiencing city distress	city distress	city distress
62. Experiencing metropolis distress	metropolis distress	metropolis distress
63. Experiencing conurbation distress	conurbation distress	conurbation distress
64. Experiencing urban area distress	urban area distress	urban area distress
65. Experiencing city distress	city distress	city distress
66. Experiencing metropolis distress	metropolis distress	metropolis distress
67. Experiencing conurbation distress	conurbation distress	conurbation distress
68. Experiencing urban area distress	urban area distress	urban area distress
69. Experiencing city distress	city distress	city distress
70. Experiencing metropolis distress	metropolis distress	metropolis distress
71. Experiencing conurbation distress	conurbation distress	conurbation distress
72. Experiencing urban area distress	urban area distress	urban area distress
73. Experiencing city distress	city distress	city distress
74. Experiencing metropolis distress	metropolis distress	metropolis distress
75. Experiencing conurbation distress	conurbation distress	conurbation distress
76. Experiencing urban area distress	urban area distress	urban area distress
77. Experiencing city distress	city distress	city distress
78. Experiencing metropolis distress	metropolis distress	metropolis distress
79. Experiencing conurbation distress	conurbation distress	conurbation distress
80. Experiencing urban area distress	urban area distress	urban area distress
81. Experiencing city distress	city distress	city distress
82. Experiencing metropolis distress	metropolis distress	metropolis distress
83. Experiencing conurbation distress	conurbation distress	conurbation distress
84. Experiencing urban area distress	urban area distress	urban area distress
85. Experiencing city distress	city distress	city distress
86. Experiencing metropolis distress	metropolis distress	metropolis distress
87. Experiencing conurbation distress	conurbation distress	conurbation distress
88. Experiencing urban area distress	urban area distress	urban area distress
89. Experiencing city distress	city distress	city distress
90. Experiencing metropolis distress	metropolis distress	metropolis distress
91. Experiencing conurbation distress	conurbation distress	conurbation distress
92. Experiencing urban area distress	urban area distress	urban area distress
93. Experiencing city distress	city distress	city distress
94. Experiencing metropolis distress	metropolis distress	metropolis distress
95. Experiencing conurbation distress	conurbation distress	conurbation distress
96. Experiencing urban area distress	urban area distress	urban area distress
97. Experiencing city distress	city distress	city distress
98. Experiencing metropolis distress	metropolis distress	metropolis distress
99. Experiencing conurbation distress	conurbation distress	conurbation distress
100. Experiencing urban area distress	urban area distress	urban area distress

BP2

Business Challenge for People Affected by Cancer

During the program, TCM expects to see people affected by:	Business challenge	Realistic goal
1. Experiencing emotional distress	emotional distress	emotional distress
2. Experiencing physical distress	physical distress	physical distress
3. Experiencing financial distress	financial distress	financial distress
4. Experiencing social distress	social distress	social distress
5. Experiencing spiritual distress	spiritual distress	spiritual distress
6. Experiencing family distress	family distress	family distress
7. Experiencing community distress	community distress	community distress
8. Experiencing environmental distress	environmental distress	environmental distress
9. Experiencing cultural distress	cultural distress	cultural distress
10. Experiencing religious distress	religious distress	religious distress



Outcome Mapping

- + reminds us what to look for per actor
- + is a framework for analysis/reflection
- + create an actor-centred ToC

Outcome Harvesting

- + open - encourages looking everywhere, beyond the expected!
- + easier to get started (can be added to existing systems)
- + Outcome statements can bring credibility and support analysis

Types of blends

- Starting with OM and evaluating with OH
- Starting with OM and monitoring with OH
- Starting with OH and then developing OM or informed actor focused ToC
- Heavy touch, light touch (OM for some, OH for some BPs)
- Introducing BP idea/actor-focused ToC and then using OH for monitoring/evaluation.



Starting with OM and evaluating with OH

If you already have an Outcome Mapping framework which you and your boundary partners have been monitoring against, doing an Outcome Harvest as a mid-term evaluation/end of project evaluation helps you to look wider and not limited to the framework!

Example

Context: A programme working to see Indigenous rights in Northeastern Cambodia.

What was done: Local teams had used OM monthly to monitor change among communities they worked with. An external consultant worked with the staff using Outcome Harvesting in a formative end evaluation.

What it led to: Relationships between actors were better understood. Staff could learn of outcomes beyond the OM journals and learn about who else might need attention.



Indigenous staff member who worked creatively to see outcomes

Starting with OM and monitoring with OH

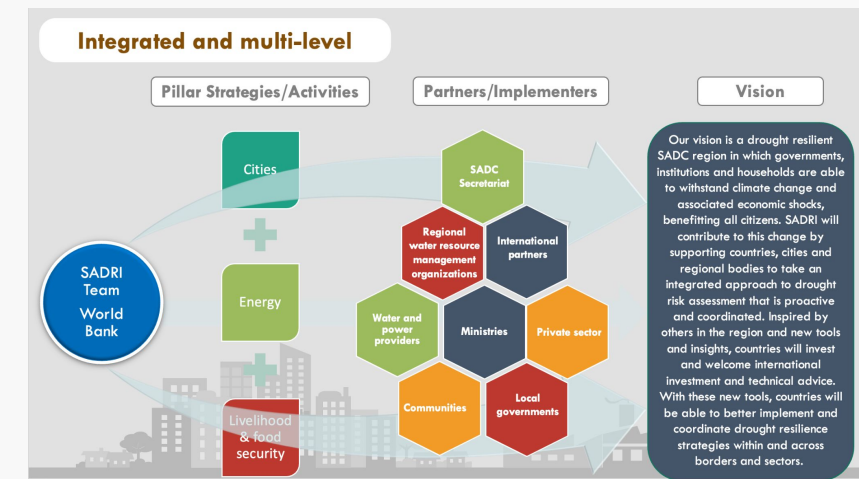
If your results framework is vague / has a 'black box' between outputs and higher-level results, an Outcome Mapping framework can help bring clarity by mapping out behaviour changes that would represent progress. Then, using Outcome Harvesting to regularly document observed outcomes can support reporting and critical reflection.

Example

Context: Technical assistance programme seeking to influence policy and practice regionally and nationally. Existing results framework was strongly focused on activities/outputs. No ToC.

What was done: A light-touch OM framework (vision, BPs, PMs) was developed by the implementer. OH used to monitor.

What it led to: OM framework used to provide focus, engage others and programme reflection. OH workshops provided verifiable data for reporting and forum for critical thinking.



Communicating the OM framework / ToC

Introducing BP idea/actor-focused ToC and then using OH for monitoring/evaluation

Introducing the concept of boundary partners and some kind of generalised actor-focused theory of change can support the process of using Outcome Harvesting for monitoring or evaluation.

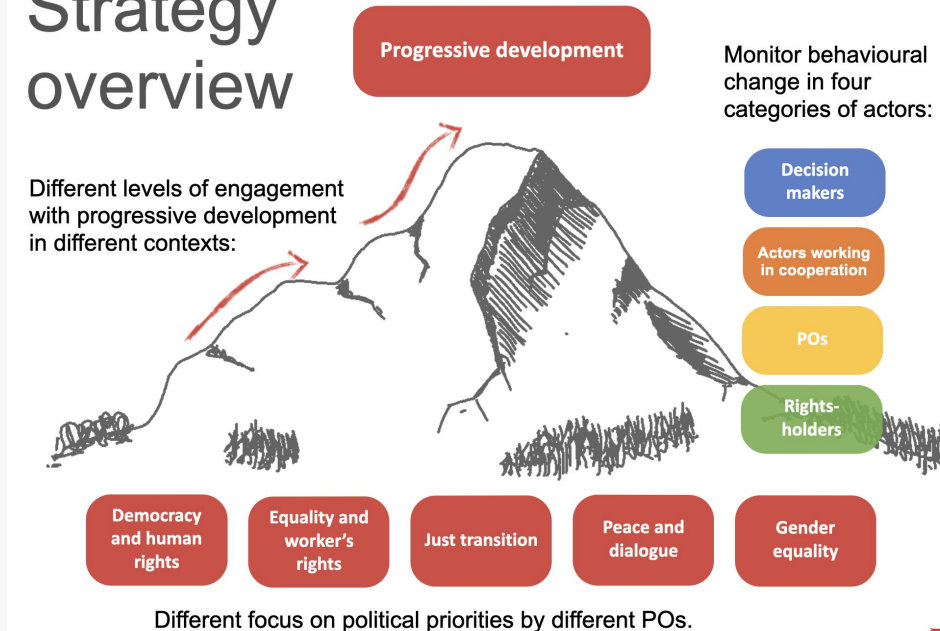
Example

Context: A Swedish organisation's programme working across several geographical regions wanted to shift focus from activities and outputs to outcomes in reporting.

What was done: Staff developed a programme with desired change in boundary partner categories for progressive development.

What it led to: A framework to aggregate data from regular Outcome Harvesting dialogue meetings with partners.

Strategy overview



The framework of themes and actors to support reporting on outcomes.

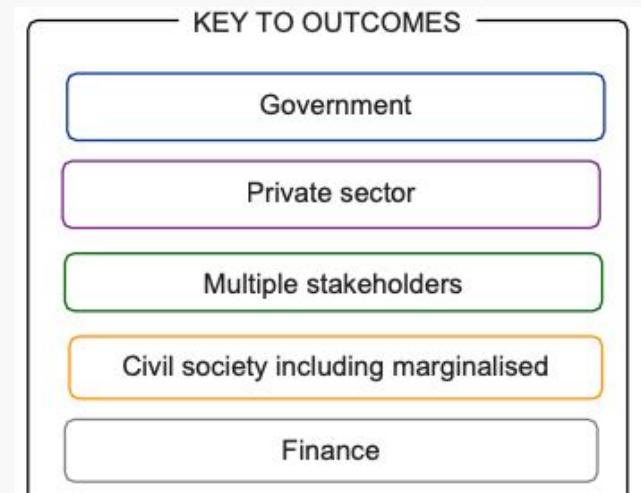
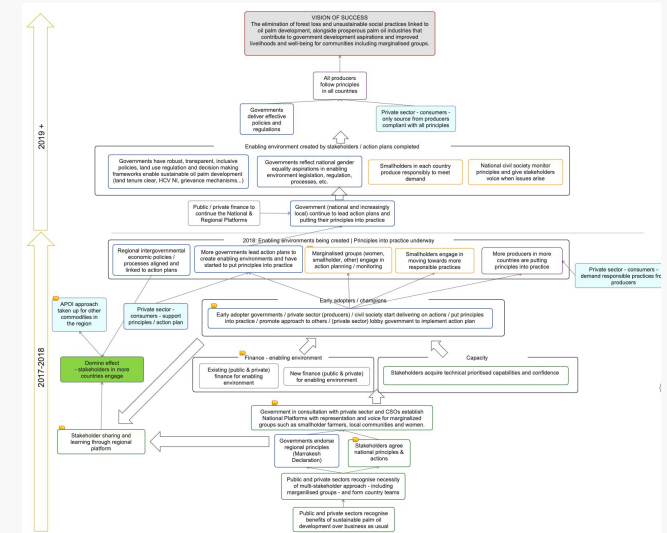
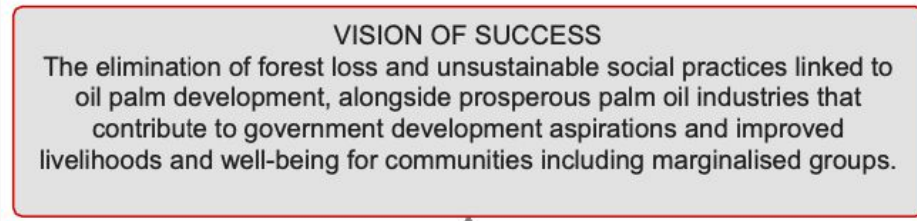
Example 2

Context: New grant for ongoing multi-stakeholder initiative, 7+ countries.

Logframe. Funder required a ToC.

What was done: Used ToC mandate to engage internal team, then funder and partners. Defined vision, types of actors, generic mini-OCs, outcome chain logic. OH to monitor.

What it led to: A common understanding of what success, and progress towards success, would look like. Framework for reflection at partner meetings. Data for reporting.



Heavy touch, light touch

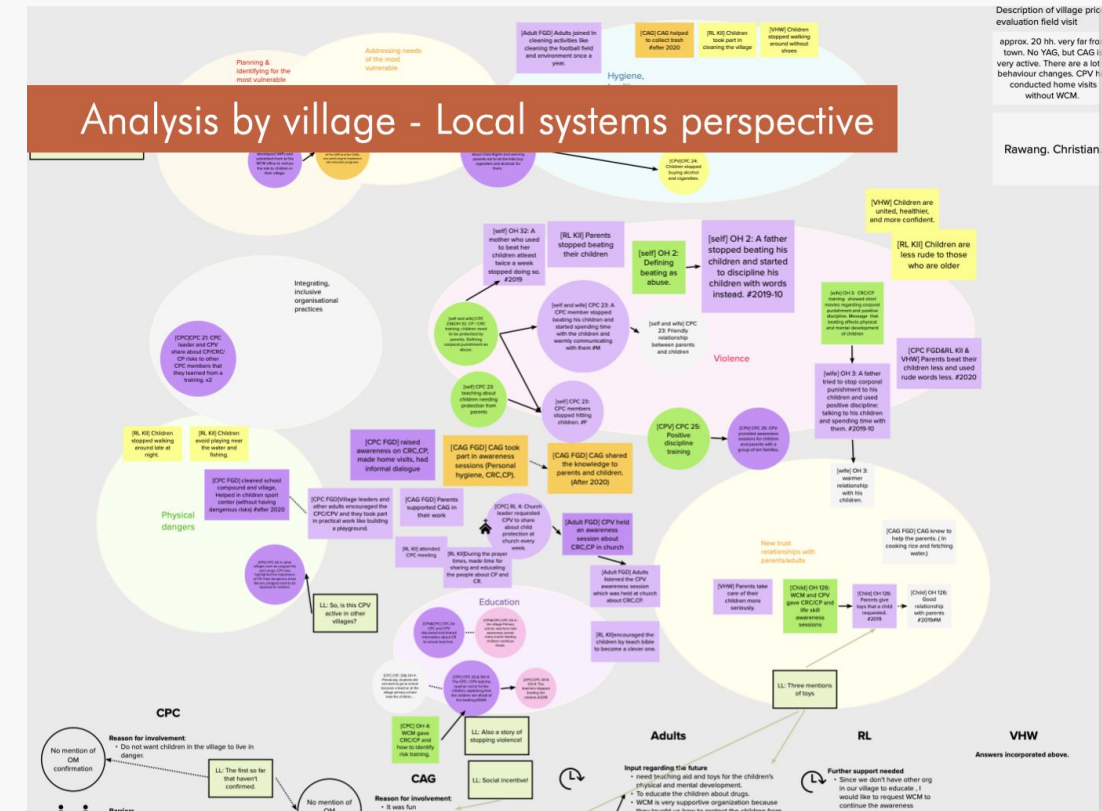
A complete set of OM progress markers for each boundary partner may feel like too big of a task or may not be appropriate given the nature of relationships with one or several of the boundary partners. Programme staff can then use Outcome Harvesting as a way to learn about outcomes for those BPs that are not monitored using PMs.

Example

Context: A project working in northern Myanmar on child protection.

What was done: Local teams developed an OM framework and monitored youth action groups, child protection committees, and department of social welfare. In addition, the local team regularly used OH to scan for outcomes among children and others in the local system.

What it led to: OM was used with partners they were in regular contact with while OH was used to learn wider about what mattered.



Outcomes data from progress markers (circles), OH monitoring data (squares) and OH evaluation data (rectangles), summarised per village

Starting with OH and then developing OM framework

Starting with an Outcome Harvest allows change agents to understand their achievements in terms of actors and behaviour changes.

The results of the Outcome Harvest can then be used to inspire and inform the design further work using Outcome Mapping.



Example

Context: The secretariat supporting a regionally organised, internationally voluntary network wanted an evaluation that assessed the value of the network and its role in it.

What was done: An external, OH evaluation was commissioned.

What it led to: A whole new way of understanding what the network had achieved - internally & externally. Defused tension around contribution: whose result is it? Inspired use OM at global and regionally.



<https://www.outcomemapping.ca/projects/project.php?id=77>

Boundary Partners (of the Regional Secretariat)	Objectives (in order of priority) (Observable and significant future changes of a Boundary Actor to which the interaction with the Regional Secretariat will contribute)
R1. BioNET-EAFRINET Regional Coordinating Institute	The Regional Coordinating Institute will be aware of how its role as an EAFRINET Coordinating Institute can help it to fulfil its mandates. It will be fully supportive of EAFRINET's Vision, Mission, Strategic Goals and Values and support the work of the Regional Coordinator through the allocation of the resources necessary for the fulfilment of BioNET-EAFRINET's Vision
R2. BioNET-EAFRINET National Coordinators	National Coordinators will clearly and consistently communicate with the Regional Coordinator for the provision of relevant information and ideas to strengthen the network
R3. BioNET-EAFRINET individual and institutional members and other taxonomy practitioners and end-users and their institutions in the region	A significant proportion of BioNET-EAFRINET individual and institutional Members in the region and other taxonomy practitioners and end-users and their institutions in the region will actively participate in the network
R4. BioNET-Secretariat	The BioNET-Secretariat will consistently support LOOP activities through proposal writing mentoring, provision of PR material to promote BioNET, establishing contacts with technical and policy partners, linkages to end-users and potential funders, taxonomic needs assessments and action plans to develop end-user oriented projects, and network strengthening including expanding country membership.
R5. Regional and national donors	Donors will increase funding for taxonomy-related projects and to support the network from national and regional sources

Boundary Partners, Objectives (OCs) and PMs at regional and national levels