



# VIL I ARBEJDE MERE MED KLIMATILPASNING I JERES PROJEKTER?

8. OKTOBER 2022

V. MARIA GRAVERSEN & HANS-JAKOB HAUSMANN

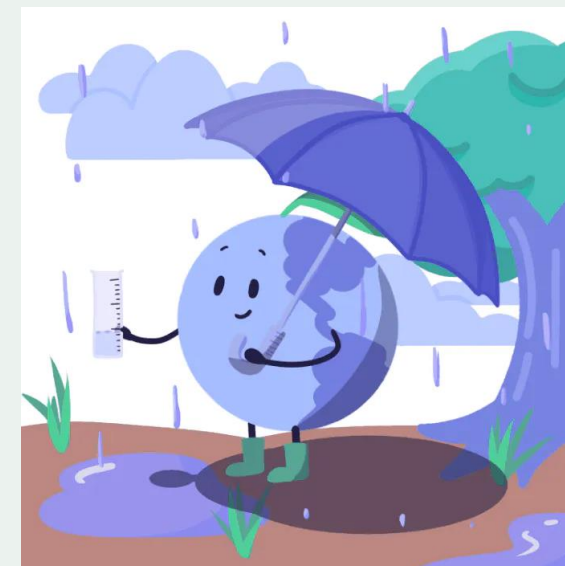
- 09.00 Velkomst & præsentation
- 09.20 Klimatilpasning – hvad er det og hvorfor er det vigtigt?
- 09.40 Klimaquiz
- 10.00 CISUs Climate Integration Tool
- 10.40 Pause og kaffe
- 10.55 *Integration af klima i Dansk Folkehjælps program* v. konstitueret generalsekretær Peder Thorning
- 11.35 Opsamling & afslutning
- 11.45 Pause & frokost

- Det er tiltag der forebygger eller forhindrer de forventede effekter af klimændringer
- Alle tiltag (tilpasning), der gør os i stand til at bibeholde/sikre adgangen til vores basale fornødenheder (mad, vand, sundhed, husly) i lyset af klimændringer

De 'to skoler' når vi snakker om klimændringer:

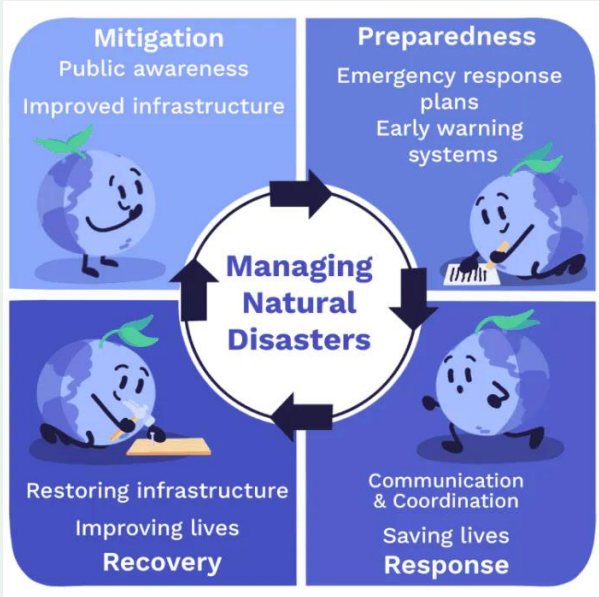
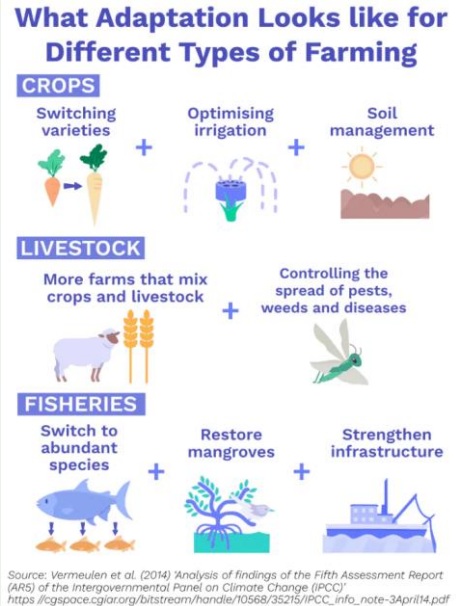
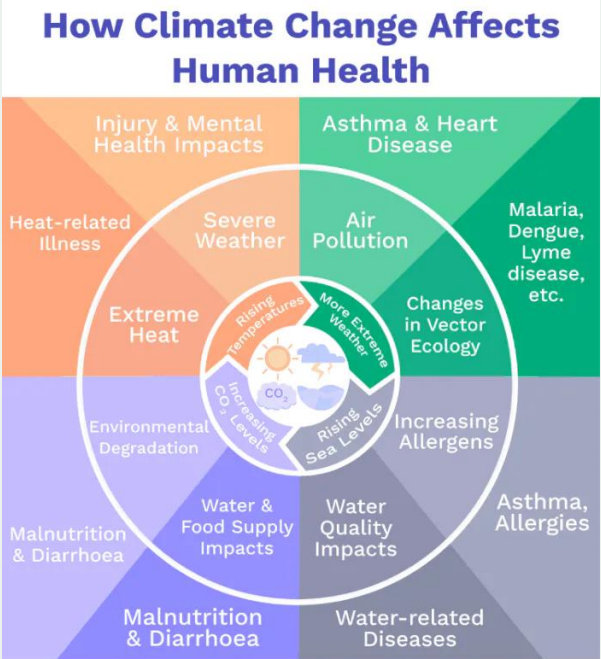
*Mitigation* (udledningen af drivhusgasser) – m.a.o.

- Tiltag der reducerer eller forebygger udledning og ophobning af drivhusgasser i atmosfæren



**Ikke et spørgsmål 'om' klimatilpasning, men 'hvordan' gør vi det?!**

- Hvis vi vælger IKKE at tilpasse os klimaet, så risikerer vi at sætte 'jagten' på Verdensmålene over styr! Vi investerer allerede rigtig meget i fattigdomsbekæmpelse, underernæring, fødevareproduktion & konflikthåndtering – men uden at indtænke klimatilpasning, er megen udvikling måske spildt...



- Bred enighed om at forbinde udvikling og klimatilpasning!
  - Undgå fremtidige tab (f.eks. infrastruktur, sundhed, fødevareproduktion)
  - Fremme økonomiske muligheder
  - Skabe bredere sociale og miljømæssige goder

*Veltilrettelagte udviklingsindsatser kan bidrage til klimatilpasning og øge sårbare befolkningsgruppers modstandsdygtighed og robusthed overfor konsekvenserne af klimaforandringer*

‘Adaptation gap’ – hvad industrialiserede lande kan ift. tilpasning og hvad mange 3. Verdenslande ikke kan:

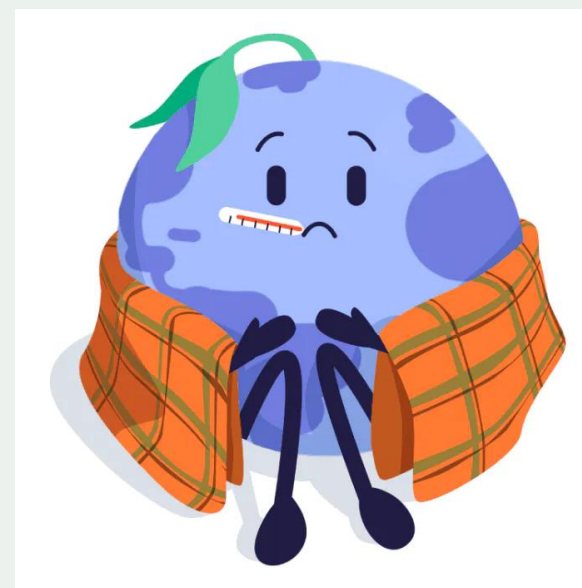
Det betyder at vi arbejder på at støtte de mest klimaudsatte befolkningsgrupper i at finde muligheder for mere effektiv realisering (teknisk, finansiel, indflydelsesmæssig) af klimatilpasningstiltag i deres nærområder.

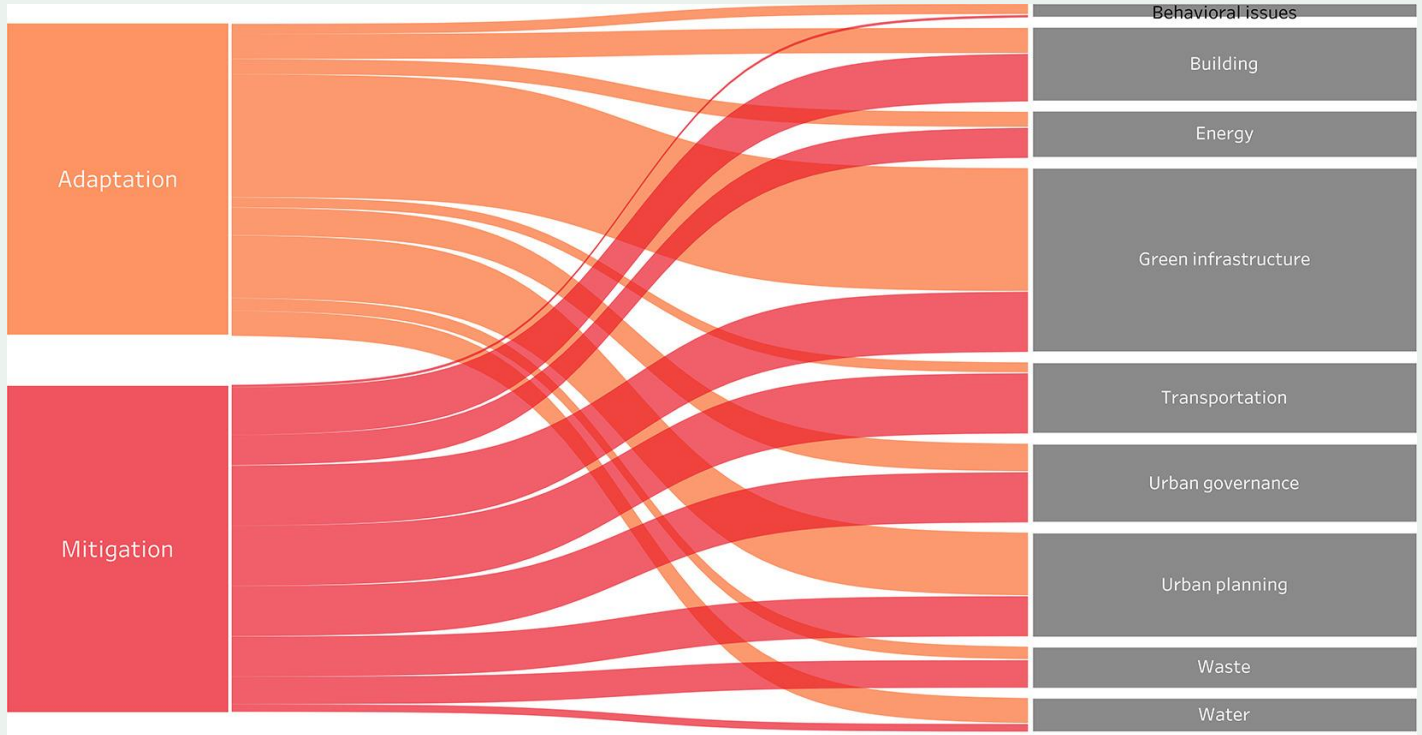
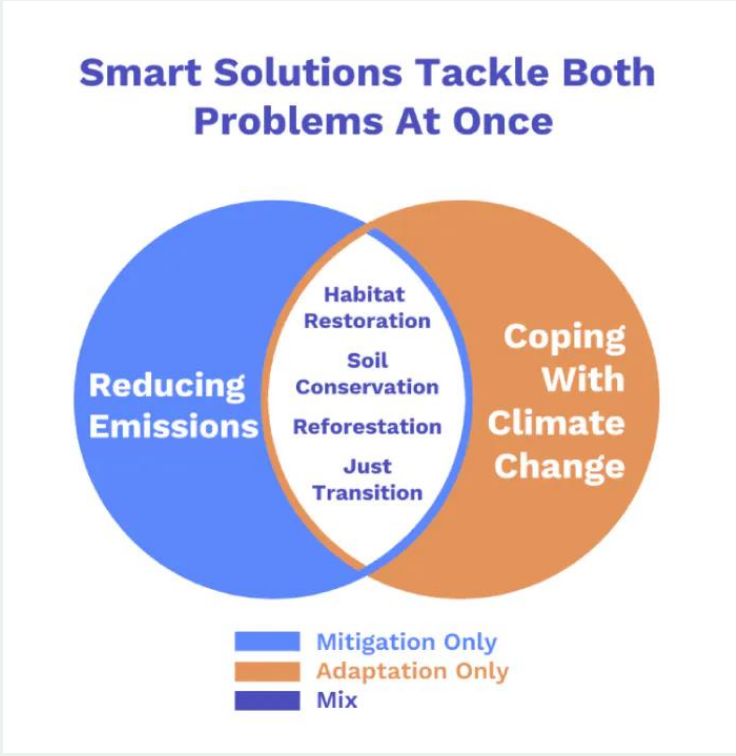




- Klimaquiz – [www.menti.com](https://www.menti.com)
- Code: 2220 0997

KLIMATILPASNING...ELLER???






Different categories of measures that provide adaptation and mitigation co-benefits

# CLIMATE INTEGRATION TOOL




CLIMATE INTEGRATION TOOL

## FOOD SECURITY, AGRICULTURE AND NATURAL RESOURCES





CLIMATE INTEGRATION TOOL

## WATER AND SANITATION




CLIMATE INTEGRATION TOOL

CISU CIVIL SOCIETY IN DEVELOPMENT




CLIMATE INTEGRATION TOOL

## HEALTH





CLIMATE INTEGRATION TOOL

## EDUCATION




CLIMATE INTEGRATION TOOL

CISU CIVIL SOCIETY IN DEVELOPMENT




CLIMATE INTEGRATION TOOL

## SUSTAINABLE ENERGY




CLIMATE INTEGRATION TOOL

## PRODUCTION, EMPLOYMENT, VALUE CHAINS AND MICROFINANCE



CLIMATE INTEGRATION TOOL

CISU CIVILSAMFUND I UDVIKLING





## FORMÅL & MÅLGRUPPE

- **Formål:** støtte civilsamfundsorganisationer i at integrere klima i deres udviklingsarbejde, hvor det er relevant
- **Målgruppe:** primært organisationer, som ikke har klima som deres kerneområde

## HVAD KAN TOOL'ET?

- Reflektere over om projektets tematik og / eller målgruppe er påvirket af eller selv påvirker klimaforandringer
- Overveje om elementer i et projekt kan gennemføres på en mere klimavenlig måde – fx produktion, byggeri, landbrug..?
- Indtænkning af klimarelaterede aktiviteter i designet af et projekt
- Monitorere på betydningen i resultater og outcomes – fx ændret modstandsdygtighed

### FULL VERSION

- Framework for climate action
- How to use this climate integration tool
- **Entry points** (intro + tematikker)
- **Opportunities** – approaches and activities (intro + tematikker)
- Cases
- Annex: SDG targets relevant for climate integration

### 6 LIGHT VERSIONS

- How to use this climate integration tool
- **Entry points** (kun tematikker)
- **Opportunities** – approaches and activities (kun tematikker)
- case

### HOW TO USE THIS CLIMATE INTEGRATION TOOL

- Intro
  - Relevant for målgruppe og/eller tematik?

• Guide



• Definitioner

**CLIMATE ACTION**  
It covers adaptation, mitigation, risk reduction and resilience building. It is linked to disaster risk reduction and closely linked to green economy and environmental management.

**ADAPTATION**  
Climate change adaptation is the processes by which human beings and societies adjust to changes in climate by making changes in production systems and social and economic organisation in order to reduce vulnerability to changing climatic conditions. Adaptation is closely linked to building resilience of societies and contributes to people's adaptive capacity. In many ways, it resembles good sustainable development.

**MITIGATION**  
Mitigation is limited to the processes by which human beings and societies address the various human activities with potential to reduce emission of greenhouse gas. With CISU funded interventions having a focus on poverty reduction, the focus in climate action integration will naturally be on adaptation. Mitigation should be understood mainly as a co-benefit in the process.





## ENTRY POINTS

- Henvisninger og direkte links til hvor man kan indhente info, og hvordan de kan sættes i spil
- Sector Policies
- National Climate Plans (NAPs, NAPAs, NDCs, etc.)
- World Bank Climate Change Knowledge Portal
- Local Development Plans
- Other Entry Points

Se side 7 i Full version

NAPs = National Adaptation Plans

NAPAs = National Adaptation Programmes of Action

NDCs = Nationally Determined Contributions



HOME NAPs MONITOR GUIDELINES NAP EVENTS

### NATIONAL ADAPTATION PLANS



#### NAPs from developing countries

Developing countries are invited to forward their national adaptation plans, and other relevant outputs and outcomes related to the process to formulate and implement NAPs to NAP Central.

Country	National Adaptation Plan	Date Posted	NAP Summary
Brazil	English, Portuguese	May 22, 2016	Read more
Burkina Faso	English, French	October 15, 2015	Read more
Cameroon	French	October 25, 2015	Read more
Chile	Spanish	September 7, 2017	Read more



Climate Change Knowledge Portal  
For Development Practitioners and Policy Makers

COUNTRY REGION WATERSHED DOWNLOAD DATA COUNTRY PROFILES AGRICULTURE PROFILES

### Climate Risk Country Profiles

#### Asia

Bangladesh

Cambodia

Indonesia

Kyrgyzstan

Laos

Nepal

Pakistan

Philippines

Sri Lanka

#### Africa

Burkina Faso

Ghana

Mali

Togo

### KEY QUESTIONS FOR YOUR ANALYSIS

Eksempler:

- Is it likely that the intervention area has e.g. **reduced productivity** and **crop loss** due to droughts and floods?
- What obstacles are there for sustainable and more **efficient use of water** and for **better coverage of sanitation**?
- Will the planned activities contribute to **more sustainable water use and/or better sanitation**?

### TYPICAL IMPACTS FROM CLIMATE CHANGE

- Decreasing or more erratic access to water; Increasing floods, droughts and water scarcity
- Destruction of water and sanitation infrastructure; Increasing difficulties in accessing clean water and proper sanitation
- Decreasing resilience of local communities

Eksempel fra WATER AND SANITATION

### OPPORTUNITIES FOR CLIMATE INTEGRATION

- Overordnede strategier/tematikker
- Mitigation eller adaption?
- Links til andre sektorer
- Eksempelvis
  - Building resilience of the poor in addressing water stress (adaption)
  - Improving access to water
  - Management of water resources

### ACTIVITIES AND APPROACHES

- Konkrete tilgange og aktiviteter man kan indeholde i sin indsats
- Eksempler
  - Supporting the **reuse of wastewater** for agricultural purposes.
  - Improving the **management of water resources and catchment areas** that are important in provision of water services to communities.
  - Including water management issues for improved resilience in farmer **training processes**.

**MONITORING:  
FORMULATION OF INDICATORS**

- Hvad man skal tænke over
- Forslag til indikatorer

**OG ENDNU EN CHECKLIST**

- Med aktiviteter

CHECKLIST		
	To be found? Yes/No	Consulted? Yes/No
Integration activities in water and sanitation		
Water infrastructure for small-scale water capture, storage, harvesting – diversify water sources		
Capacity building for increased local resilience and adaptive capacity		
Reuse of wastewater for agricultural purposes		
Water conservation measures in the farming landscape		
Management of water resources and catchment areas		
Natural infrastructure for treatment/purification		
Efficient water use in farming, production - water management innovations		





### PRAKTISK CASE

...der applicerer fremgangsmåden i dette Climate Integration Tool inden for hvert tema

6 CLEAN WATER AND SANITATION



## ADAPTING WATER MANAGEMENT TO CLIMATE CHANGE

A CISU member and their partner want to integrate climate action in a new project within water development and sanitation promotion in multiple districts in Malawi.

In information contained in the communication by Malawi to UNFCCC, the World Bank Climate Change Knowledge Portal and the water and sanitation sector documents, it is stressed that **improved watershed management and small-scale water harvesting** infrastructure are relevant adaptation measures in the area.

Watershed management has important mitigation co-benefits. Information on specific water infrastructure developments and watershed development initiatives are found in the district developments plans and the land use plans for the districts. This includes information on what type of water harvesting technologies are most appropriate in the targeted districts.

Hence, the partners will put further stress on promoting watershed management and small-scale water harvesting infrastructure in their activities.

The activities are to be addressed in relation to advocacy, capacity development as well as in strategic services.

The objectives and outputs of the proposed project are formulated so that they include improved capacity of the targeted communities to **address climate-induced water stress**. Indicators revolve around improved watershed management and increase in **target group's water access** from water harvesting infrastructure.

*The practical example is constructed based on experiences from interventions of different CISU members organizations.*

**ANNEX**

...til sidst (i den fulde version) er der en oversigt over alle de 63 delmål af verdensmålene, hvor der er en direkte kobling til integration af klima

**ANNEX**

# SDG TARGETS RELEVANT FOR CLIMATE ACTION INTEGRATION



**End poverty in all its forms everywhere**



by 2030 ensure that all men and women, particularly the poor and the vulnerable, have equal rights to economic resources, as well as access to basic services, ownership, and control over land and other forms of property, inheritance, natural resources, appropriate new technology, and financial services including microfinance.



by 2030 build the resilience of the poor and those in vulnerable situations, and reduce their exposure and vulnerability to climate-related extreme events and other economic, social and environmental shocks and disasters.



**End hunger, achieve food security**

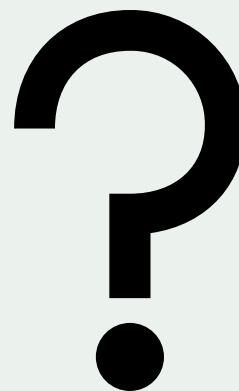
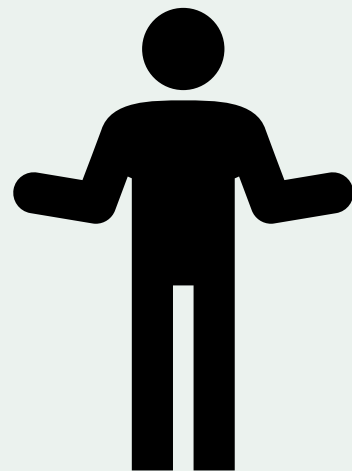


by 2030 double the agricultural productivity and the incomes of small-scale food



by 2030 ensure sustainable food production systems and implement resilient agricultural

SPØRGSMÅL?



PAUSE

TID TIL EN LILLE PAUSE – VI STARTER IGEN 10.30





## HVORDAN HAR ORGANISATIONER BRUGT CISUS CLIMATE INTEGRATION TOOL TIL AT ARBEJDE MED KLIMATILPASNING?

Integration af klimatilpasning i Dansk  
Folkehjælps WASH program i Østafrika  
ved konstitueret generalsekretær Peder  
Thorning

