

A young boy in a blue school uniform is looking down at a book in his hands. He is in a rural setting, possibly a school or a community center, with other people and objects visible in the background. The image is framed by a black border.

DREAMTOWN

Samarbejde, forskning og civilsamfund i
udviklingsprojekter

TORSDAG DEN 3. DECEMBER 2021



Vidensproduktion – hvordan bliver vi klogere?

Vidensanvendelse – hvordan bruger vi viden?

Vidensdeling – hvordan bliver vi sammen klogere?



1 Youth Wellbeing Survey
Measuring the state of youth wellbeing.



2 Dream Collection
Identifying youth priorities for public space.



3 Space Development
Developing public spaces based on youth dreams.



4 Advocacy
Advocating for youth participation and access to public spaces in slums.

Vidensproduktion - hvad blev vi klogere på?

PROJEKTRAMME: Creating spaces for young people in urban Sierra Leone

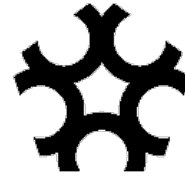


PARTNERSKAB



Youth
Dream
Centre
Sierra
Leone

**DREAM
TOWN**



UNIVERSITY OF
CANBERRA





VORES RESEARCHFOKUS

- Explore key factors influencing **youth wellbeing**
- Through contextual and youth inclusive research
- Concretise elements of wellbeing for young Sierra Leoneans in their everyday life in the city
- Develop a detailed understanding of youth wellbeing with strong roots in the context of Sierra Leone



1

TRAINING DATA COLLECTORS
January 2019

DATA COLLECTION
February-March 2019

2



3.2.4 Expected change in quality of life

Table 7 Expected change in life over the coming 12 months

Youth respondents	Worse	Same	Bet-ter	Gender	Worse	Same	Bet-ter	Region	Worse	Same	Bet-ter
All respondents	1.5%	9.4%	89.1%	Female	2.0%	10.3%	87.8%	Freetown	0.7%	4.3%	95.0%
Age group	Worse	Same	Bet-ter	Male	1.0%	6.7%	90.4%	Kono	0.5%	0.5%	99.0%
15-19	0.9%	9.9%	89.3%	Migra-tion history	Worse	Same	Bet-ter	Makeni	2.8%	20.8%	76.3%
20-24	0.6%	9.4%	90.0%	Always lived here	2.5%	16.1%	81.4%	Community	Worse	Same	Bet-ter
25-35	2.7%	9.2%	88.2%	Shifted from city	1.3%	6.0%	92.7%	Congo Town	1.8%	1.8%	96.4%
Ethnic group	Worse	Same	Bet-ter	Shifted from town	0.3%	6.8%	92.9%	England VII Gaderich Funkia	0.0%	7.2%	92.8%
Mende	4.3%	8.7%	87.0%	Shifted from rural	0.5%	8.4%	91.2%	Newtown Bonso Town Community	0.0%	4.5%	95.5%
Temne	1.7%	16.4%	81.9%	Marital status	Worse	Same	Bet-ter	Kensay	1.8%	0.0%	98.2%
Mand-ingo	1.6%	3.1%	95.3%	Single	1.1%	9.1%	89.8%	Koeyor	0.0%	1.2%	98.8%
Limba	1.0%	6.1%	92.9%	Has a partner	2.9%	10.7%	86.6%	Koquima	0.0%	0.0%	100%
Kono	0.4%	1.2%	98.4%	Marned	1.7%	10.1%	88.2%	Mabantia	1.1%	17.8%	81.1%
								New London	1.7%	19.0%	79.3%
								Renka Community	0.0%	4.5%	95.5%

ANALYSIS OF DATA
QUALITATIVE INTERVIEWS
March-October 2019

3



4

GROUND-TRUTHING FINDINGS
November 2019



5

FINALISING RESEARCH REPORT
March 2020



YOUTH WELLBEING SURVEY, SIERRA LEONE 2019

	Place	Number of respondents
Nine communities	Total sample	1091
	Congo Town, Freetown	111
	Funkia, Freetown	84
	Kainsay, Kono	109
	Koeyor, Kono	167
	Koakoyima, Kono	106
	Mabanta, Makeni	90
	New London, Makeni	116
	Bonga Town, Freetown	88
Renka Community Makeni	220	
Three cities	Freetown	283
	Kono	382
	Makeni	426

ABILITY TO ACCESS NATURE-CONNECTION SPACES OUTSIDE HOME

Do you have nature or 'green' (plant-filled) spaces you can safely spend time in?

		No	Yes, but it is difficult for me to get to them	Yes, and they are easy for me to get to
	Total sample	62.3%	5.3%	32.4%
Nine communities	Bonga Congo Town Freetown	81.0%	5.1%	13.9%
	England Vill Goderich Funkia Freetown	77.4%	9.5%	13.1%
	Kensay, Kono	58.7%	0.0%	41.3%
	Koeyor, Kono	58.1%	1.8%	40.1%
	Koquima, Kono	51.9%	6.6%	41.5%
	Mabanta, Makeni	45.6%	3.3%	51.1%
	New London, Makeni	54.3%	11.2%	34.5%
	Newton Community, Freetown	51.2%	24.4%	24.4%
	Renka Community Makeni	66.7%	2.7%	30.6%
Three cities	Freetown	75.6%	9.2%	15.2%
	Kono	56.5%	2.6%	40.8%
	Makeni	58.5%	5.2%	36.3%
Years lived in region	Lived in region 2 years or less	66.0%	4.0%	30.0%
	Lived in region 3-5 years	60.2%	7.2%	32.6%
	Lived in region 6-15 years	63.1%	6.0%	30.9%
	Lived in region 16 or more years	61.6%	4.6%	33.8%
Type of community lived in previously	Previously lived in a city	58.7%	8.3%	33.0%
	Previously lived in a town	61.4%	4.4%	34.2%
	Previously lived in a rural area	65.3%	4.6%	30.1%
	Have always lived in current place	62.8%	4.1%	33.1%



EXPECTATIONS ABOUT THE NEXT YEAR

In one year from now, do you expect that your life will be better, will be more or less the same, or will be worse, overall?

		Worse	More or less the same	Better
Educational attainment	No education	3.5%	13.3%	83.2%
	Primary or early childhood education	0.6%	10.3%	89.1%
	Junior secondary	0.9%	8.6%	90.5%
	Senior secondary	1.7%	9.7%	88.7%
	Post-school education (e.g. teacher, nurse, university training)	1.3%	3.8%	95.0%
Self-rated literacy	Cannot read at all	2.1%	13.7%	84.1%
	Can read a little	1.8%	10.2%	88.0%
	Can read well	0.9%	6.5%	92.6%
Access to food - detailed	Did not go hungry last 30 days	0.8%	6.5%	92.7%
	Rarely went hungry last 30 days	0.4%	8.7%	90.9%
	Sometimes went hungry last 30 days	3.2%	15.6%	81.2%
	Often went hungry last 30 days	6.3%	22.5%	71.3%
Access to food - two groups	Did not go hungry last 30 days	0.8%	6.5%	92.7%
	Went hungry in last 30 days	2.3%	13.2%	84.6%

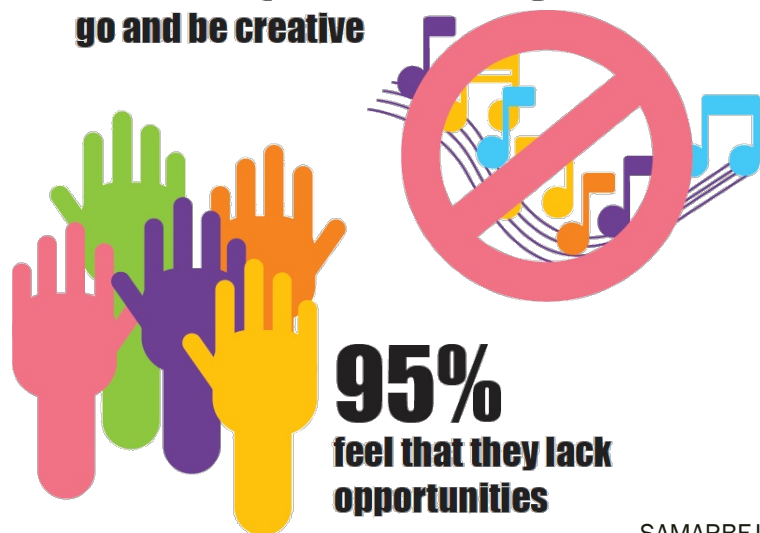
RESULTATER



58%
feel that young
people are not
being listened to

75%

do not have places where they can
go and be creative



95%
feel that they lack
opportunities



62%
have no access
to nature or
'green' spaces



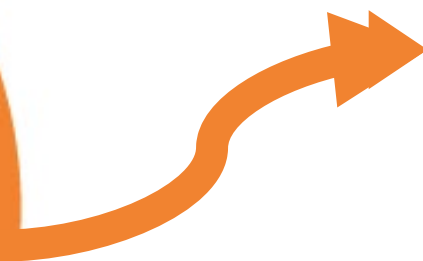
68%

believe that walking
safely alone is a problem

survey baseline report



creating
space
for young people
in urban slums of
Sierra Leone



Videnanvendelse - hvad brugte vi det til?

- Develop short version of the report
- Discuss findings with community youth groups
- Present findings to community and city authorities
- Share with research community in Sierra Leone
- Share with international research community
- Inform future projects and fundraising
- Contribute to knowledge on youth wellbeing
- Building strong partnerships + capacity
- Legitimacy in project communities
- Publish articles
- Evaluation of project impact





HVAD SIGER FORSKEREN?





UDFORDRINGER

Partnerships with busy researchers are time consuming!

=> Dependency on professional research expertise

How to balance 'scientific data' and requirements that follow with youth inclusion and relevance for the target group

Managing expectations – accountability towards the people who share their knowledge and help create the data



HVAD SIGER FORSKEREN?





SE FULDT INTERVIEW MED GREGOR MEWS FRA QUEENS UNIERSITY

- <https://youtu.be/sIIecVuUzyM>



HVORDAN VIL VI ARBEJDE MED VIDEN FREMADRETTET?

VIDENSPRODUKTION OG ANVENDELSE:

Vores strategier for viden?

Mere fokus på ungeinddragelse og hurtigere vidensprocesser

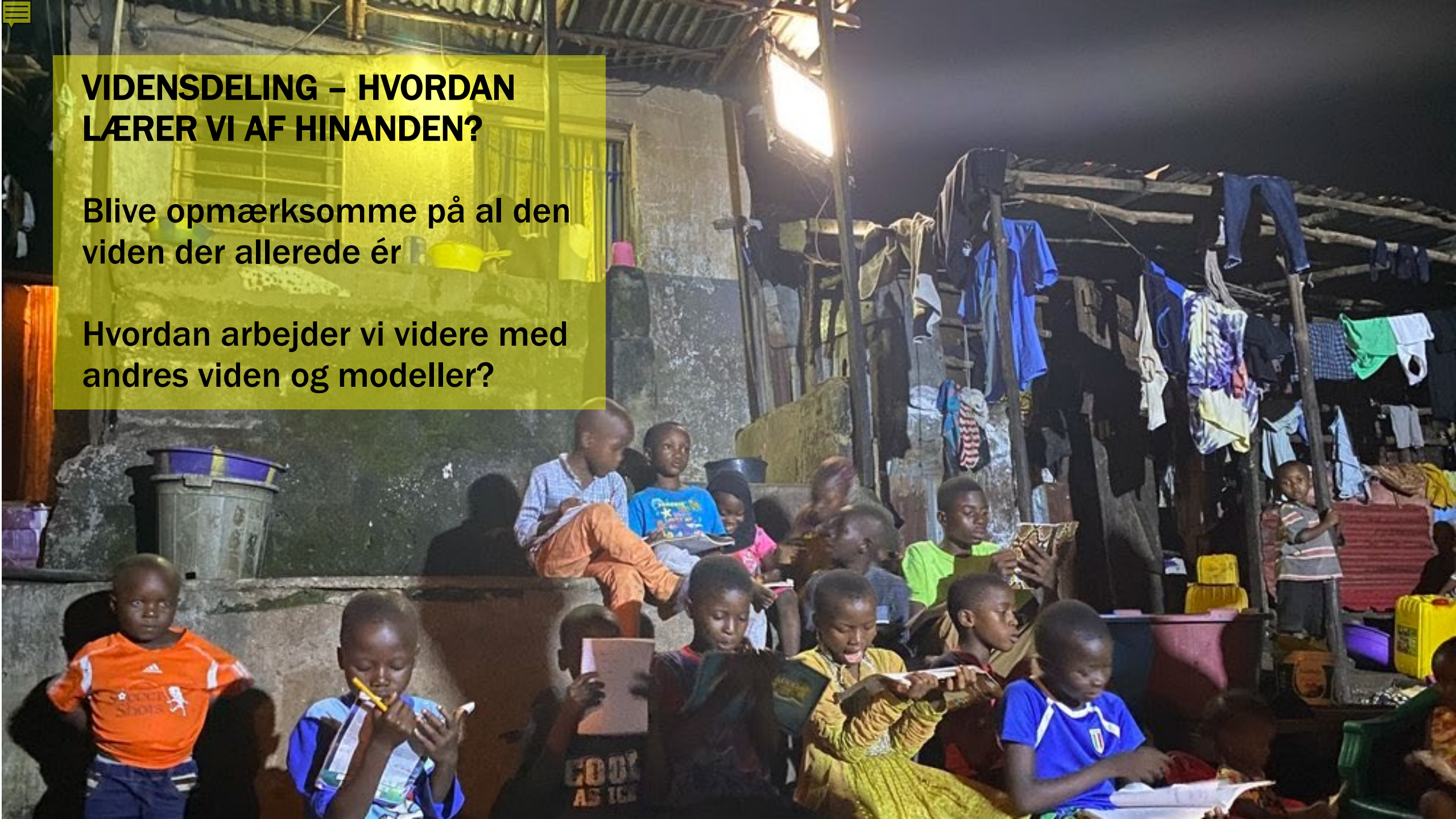
Vidensproduktionen kommer tilbage i vores projektevaluering - i nyt format

Vores arbejde med Monitoring, Evaluation, Learning - design af indikatorer

VIDENSDELING – HVORDAN LÆRER VI AF HINANDEN?

Blive opmærksomme på al den viden der allerede ér

Hvordan arbejder vi videre med andres viden og modeller?



"GUIDING PRINCIPLES"

New opportunities, partnerships, networks, legitimacy

Accountability is everything – never just for the sake of the research

=> Responsibility for application and transformative use of the data

About? For? With? By? Integration of ownership and learning/capacity => level of participation?

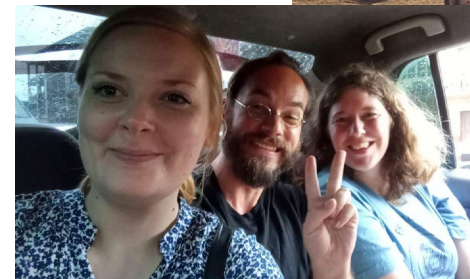
Localized research?

Importance of a "truthing" process – open to mistakes

Manage expectations between partners

Consider time perspective

Use research in existing structures of the projects – e.g. in baseline and/or evaluations



An aerial photograph of a coastal town. On the left, a wide river flows through a mangrove forest. The town is built on a slope, with a dense cluster of small, simple houses in the foreground and more modern, multi-story buildings further up. The sky is clear and bright.

TAK FOR JERES TID!

SAMARBEJDE, FORSKNING OG CIVILSAMFUND I UDVIKLINGSPROJEKTER
TORS DAG 3. DECEMBER 2021

DREAMTOWN